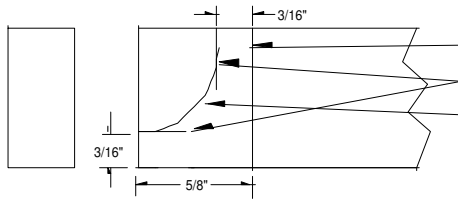


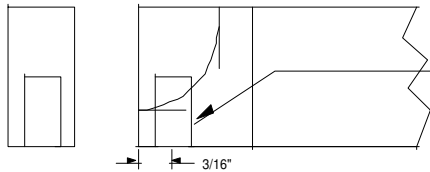
# HOW TO FABRICATE RAW BRASS BANJO BRACKETS

1



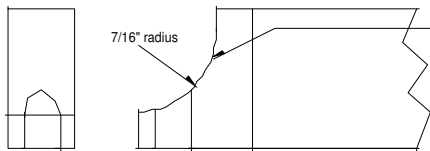
Draw a line  $5/8$ " in from each end of  $3/8$ " by  $3/4$ " brass bar stock.  
 Mark  $3/16$ " up from bottom and  $3/16$ " in from previously drawn line.  
 Draw a  $7/16$ " radius arc to blend these lines together.  
 A 12" length of bar stock will easily make 16 raw brass brackets.

2



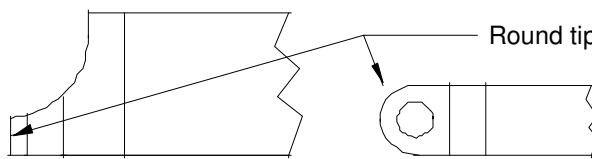
Drill  $3/8$ " deep  $3/16$ " diameter blind hole  $3/16$ " in from end.

3



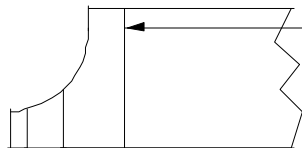
Rough cut curve profile with bandsaw.  
 Refine profile and sand to shape using a  $3/4$ " diameter sanding drum on a vertical oscillating spindle sander.

4



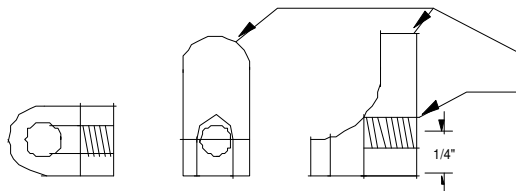
Round tip of bracket using a small disc sander.

5



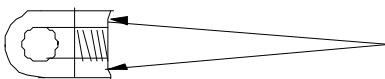
Cut bracket off.  
 Square ends and repeat steps 1-5 to make number of brackets desired.  
 Perform steps 1-5 on both ends of brass bar stock to save time.

6



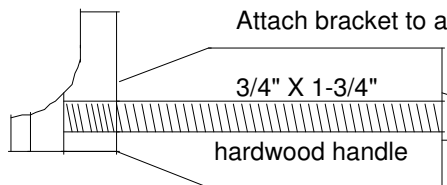
Round tip of bracket using a small disc sander.  
 Drill  $5/32$ " hole for bracket bolt  $1/4$ " up from bottom edge.  
 Tap for #10-32 stainless steel machine screw.  
 1" screw is used for  $3/4$ " thick rim, adjust length as needed.

7



Radius sand inner face of bracket with largest available spindle sander drum.  
 A 3" diameter drum works well.

8



Attach bracket to a temporary wooden handle by means of a 2" long machine screw.  
 Clamp handle in vise and round bracket edges with a small  $3/4$ " sanding drum held in a rotary hobby tool.  
 Sand with 150 grit paper to smooth rough surfaces and round edges.  
 Mirror polish bracket with a 6" polishing pad mounted in a drill press.  
 Add polishing compound to the rotating pad and use the wooden handle to hold the bracket while it is being polished.